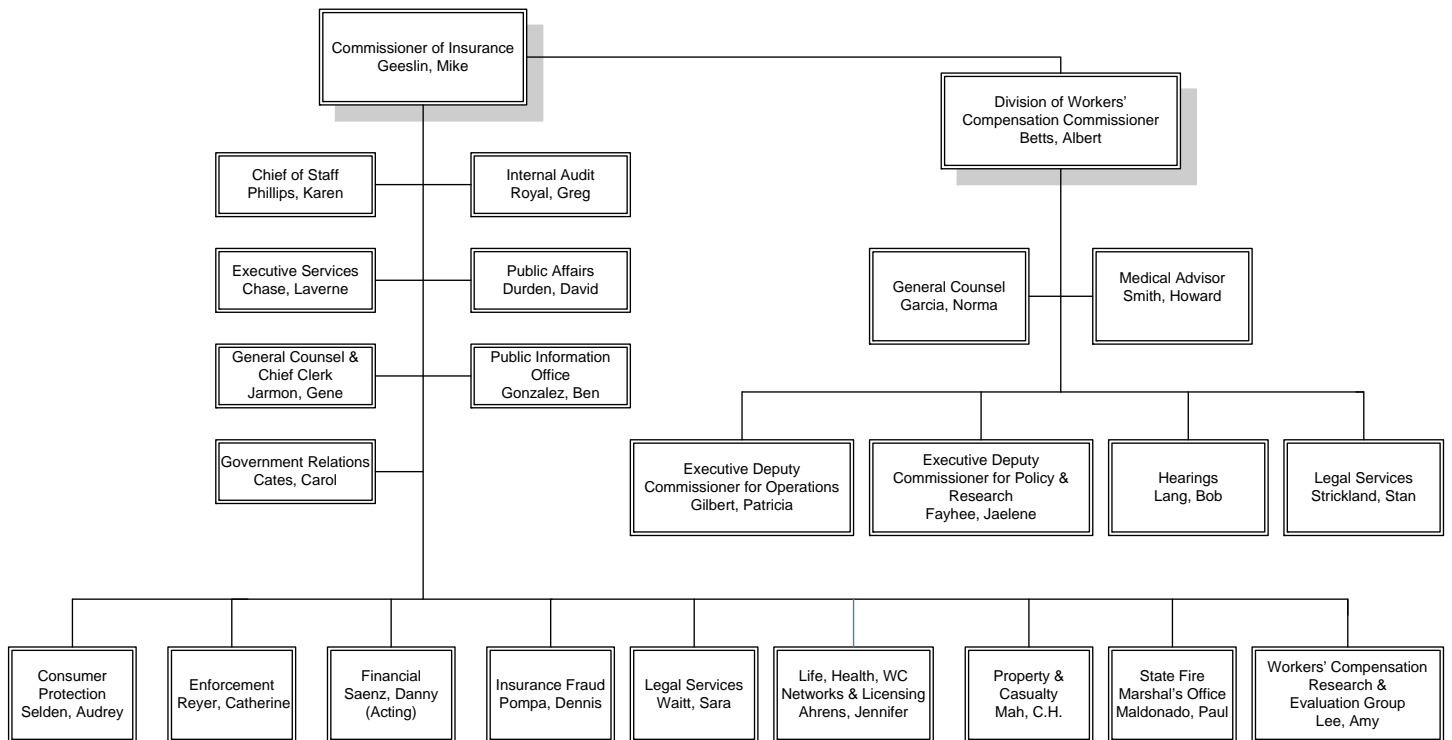


VI. Organization

A. Provide an organizational chart that includes major programs and divisions, and shows the number of FTEs in each program or division.

**Texas Department of Insurance
Agency Organizational Chart
July 2007**



The July 31, 2007, organizational chart is attached to the TDI Self-Evaluation Report. The attachment includes agency, program, and division-level organizational charts. Additionally, the August 31, 2006, organizational chart is available for review.

B. If applicable, fill in the chart below listing field or regional offices.

Texas Department of Insurance Exhibit 10: FTEs by Location - Fiscal Year 2006			
Headquarters, Region, or Field Office	Location	Budgeted FTEs FY 2006	Actual FTEs, as of August 31, 2006
TDI – Hobby Headquarters	Austin	791.3	759.30
DWC – Metro Headquarters	Austin	640.43	525.80
TDI Field Office – Central Texas	San Antonio	16	16
TDI Field Office – North Texas	Dallas	34	27
TDI Field Office – South Texas	Houston	24	21
Angleton Field Office (Windstorm)	Angleton	7	6
Beaumont Field Office (Windstorm)	Beaumont	3	3
Corpus Christi Office (Windstorm)	Corpus Christi	6	6
La Marque Field Office (Windstorm)	La Marque	7	5
Corpus Christi (Fire Marshal)	Corpus Christi	5	5
State Fire Marshal Field Staff	Various local communities	12	12
DWC – Field Offices	See note*	260.37	234
TOTAL		1,806.1	1,627.1

*Note: As of August 31, 2006, DWC had field offices in the following cities: Abilene, Amarillo, Austin, Beaumont, Bryan, Corpus Christi, Dallas, Denton, El Paso, Fort Worth, Houston (East and West), Laredo, Lubbock, Lufkin, Midland, Missouri City, San Angelo, San Antonio, Tyler, Victoria, Waco, Weslaco, and Wichita Falls.

C. What are your agency’s FTE caps for fiscal years 2006 - 2009?

Texas Department of Insurance FTE caps, FY 2006 - 2009				
	2006	2007	2008	2009
TDI (not including DWC) (Art. VIII-25)	923.8	923.8	903.1	903.1
Mandated Reductions (Art. IX, Sec 6.14 (a)(2))	(18.5)	(18.5)		
Long-Term Care (Art. VIII-31, Rider 16)			3.0	3.0
Cross-Border Health (Art. VIII-32, Rider 17 - vetoed)			2.0	2.0
3 Share Premium Assistance (Art VIII-32, Rider 18)			1.0	1.0
Residential Mortgage Fraud (Art IX-76, Sec. 19.10)			3.0	3.0
HMO Data Collection (Art. IX-84, Sec. 19.44)			1.0	1.0
Cigarette Regulation (Art. IX-101, Sec.19.94)			2.0	9.0
Data Center Consolidation (Art IX. Sec 18.02)			(6.9)	(6.9)
Subtotal	905.3	905.3	908.2	915.2
DWC (Art. VIII-25)	1012.0	1012.0	801.3	801.3
OIEC (Art. IX, Sec 14.02 (a))	(91.0)	(91.0)		
Mandated Reductions (Art. IX, Sec 6.14 (a)(2))	(20.2)	(20.2)		
Data Center Consolidation (Art. IX, Sec 18.02)			(16.0)	(16.0)
Subtotal	900.8	900.8	785.3	785.3
TOTAL TDI	1806.1	1806.1	1693.5	1700.5

D. How many temporary or contract employees did your agency have as of August 31, 2006?

TDI had five contracted and four temporary employees as of August 31, 2006.

E. List each of your agency's key programs or functions, along with expenditures and FTEs by program.

Texas Department of Insurance Exhibit 11: List of Program FTEs and Expenditures C Fiscal Year 2006		
Program	FTEs as of August 31, 2006	Actual Expenditures
Administrative Operations	196	\$21,279,161.98
Commissioner's Administration	40.6	2,599,161.82
Consumer Protection	74.1	3,668,014.13
Enforcement	50	2,347,560.98
Financial	181.85	10,565,051.88
Fraud	37	1,921,205.06
Legal Services	39	2,269,064.45
Life, Health & Licensing	139	6,007,615.12
Property & Casualty	134.75	6,664,799.44
State Fire Marshal	68	3,406,353.18
Workers' Compensation Research Evaluation Group	3	418,008.19
DWC Commissioner's Administration	12.8	950,200.71
DWC Dispute Resolution	129	6,728,082.56
DWC Field Services	353	11,784,904.38
DWC Legal & Compliance/Enforcement	45	2,410,655.72
DWC Policy & Research	45	2,384,417.22
DWC Workplace & Medical Services	79	3,995,918.43
DWC Subsequent Injury Fund Disbursements	N/A	2,626,768.67
TOTAL	1,627.1	\$92,026,943.92